



THE UNIVERSITY OF
WINNIPEG

Preparing for Your Thesis in Psychology

Do some thinking about what areas of Psychology interest you, and what methods you find interesting. Read the profiles of each potential faculty advisors. Think about who you might like to work with.

1

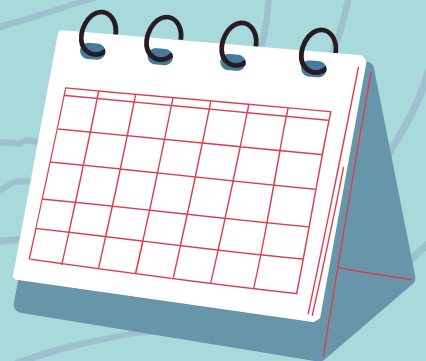


2

Find an advisor! Contact potential advisors via email. Ask if they plan to take on thesis students. Be professional and courteous, and be specific about your interests, and if you have them, ideas for a thesis.

Contact faculty early! Advisors should be set before thesis class begins. However, it is best to reach out MUCH earlier. February/March are usually good times to send initial emails to faculty.

3

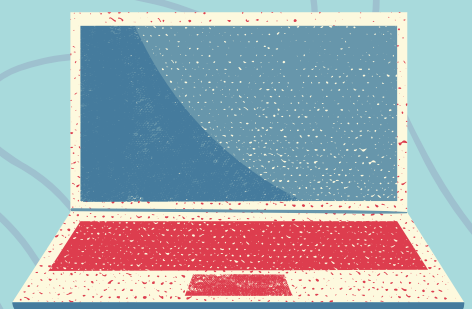


4

Meet with potential advisors to talk about possible projects. Keep in mind that faculty advisors may have lots of interest and only take a small number of students.

Get started! Once you have secured an advisor, you will discuss plans for your thesis, develop your project and possibly start reading ahead of the class beginning in the fall term.

5



Still have questions? Send us an email.



Psychology Faculty Interests

Dr. Harinder Aujla, Physiology

Dr. Aujla's interests fall in two broad areas.: 1) applying computational models of memory and semantics to categorizing and comparing text. Second, developing tools to calculate signal detection metrics when the assumptions of the theory of signal detection are violated. [Click here for more info.](#)

Dr. Bruce Bolster, Physiology & Neuropsychology

Dr. Bolster's interests focus on the contribution of temporal lobe structures to attention and memory. Research tools include structural and functional MRI, along with assessment of cognitive performance. Computer generated virtual environments are used to assess navigation and episodic memory in healthy individuals and those with temporal lobe pathology. [Click here for more info.](#)

Dr. Derrick Bourassa, Cognitive Development

Dr. Bourassa's research interests focus on reading and language development in children, including differences between poor and typical readers.

Dr. Hinton Bradbury, Developmental

Dr. Bradbury's research interests focus on the development and consistency of children's preferences.

Dr. Erin Buckels, Personality

Dr. Buckels' research interests are the psychological underpinnings of human cruelty, such as the dark tetrad of personality (subclinical sadism, psychopathy, narcissism, and Machiavellianism). [Click here for more info.](#)

Dr. Stephanie Bugden, Development, Cog. Neuro.

Dr. Bugden's main research interest is numeracy in children. This includes what leads some children to excel in math while others struggle, and the cognitive and neurological mechanisms associated with individual differences in numerical and math development. [Click here for more info.](#)

Dr. Jim Clark, Cognitive

Dr. Clark is interested in the basic cognitive processes, such as activation and inhibition, that underly complex behaviours such as memory and language. He also has diverse interests related to the psychology of knowledge production, culture, religious belief, and scientific skepticism. [Click here for more info.](#)

Dr. Amy Desroches, Development, Cog. Neuro.

Dr. Desroches is interested in the development of reading and language. This includes the neural underpinnings of learning disorders of reading and language, as well as bilingualism. [Click here for more info.](#)

Dr. Beverley Fehr, Social

Dr. Fehr's interests are close relationships and especially the psychology of compassionate love. Her work has examined relational phenomena such as (dis)satisfaction, friendship, well-being, boredom, emotions, and relationship dissolution. [Click here for more info.](#)

Dr. Justin Friesen, Social

Dr. Friesen's interests are in two broad areas. First, on the psychological motivations driving why people justify the status quo or hold certain political beliefs. Second, on the social vision of intergroup relations and how people use visual attention to form judgments of others. [Click here for more info.](#)

Dr. Jeremy Frimer, Social

Dr. Frimer's main interests are within moral and political psychology. He has particularly studied incivility in political discourse, the moral elements of political beliefs and heroism, and differences/similarities between political liberals and conservatives. [Click here for more info.](#)



Psychology Faculty Interests

Dr. Brandon Goulding, Cognitive Development

Dr. Goulding is interested in cognition in children, especially how they reason about what is possible, improbable, or impossible. He has explored children's reasoning about their future selves and ownership. [Click here for more info.](#)

Dr. Michael Halldorson, Experimental & Cognitive

Dr. Halldorson's interests are within cognitive psychology. He has specifically investigated phenomena such as mindfulness and the emotional & nostalgic effects of music.

Dr. Pauline Pearson, Perception

Dr. Pearson is interested in the visual experience of the world around us, the physiological mechanisms that underlie vision, and the effect of damage and disease on that experience. [Click here for more info.](#)

Dr. Lisa Sinclair, Social

Dr. Sinclair is interested in prejudice and stereotyping related to gender and other social groups. She has specifically investigated the social cognitive elements of these phenomena and stereotyping is driven by psychological motives, such as to defend one's self-worth against criticism. [Click here for more info.](#)

Dr. Stephen Smith, Cognitive Neuroscience

Dr. Smith is interested in the experience, perception, and neurological underpinnings of emotions. He investigates emotion and attention, emotion regulation, the role of the spinal cord in emotional responses, and autonomous sensory meridian response (ASMR). He has also studied associations between personality, gambling behaviour and brain structure. [Click here for more info.](#)

Dr. Harry Strub, Psychology & the Arts

Dr. Strub is interested in links between psychology and the arts, such as the creative process and the emotional profiles of different pieces of music. [Click here for more info.](#)

Dr. Paul Trapnell, Personality

Dr. Trapnell's interests are in human personality, including its structure and measurement, and how personality predicts unsavoury behaviours such as internet trolling and dehumanization. [Click here for more info.](#)

Dr. Doug Williams, Behavioural

Dr. Williams is interested in the basic psychological processes of learning in humans and animals. For example, how people form conditioned associations between neutral and aversive events. [Click here for more info.](#)

Faculty Supervisors from Other Departments

With special permission from the [Honours Committee](#) RAS members of other departments may supervise Psychology theses. In such cases, the secondary advisor must be from the Department of Psychology. Some RAS faculty with ties to Psychology include (but are not limited to):

Dr. Michelle Bertrand (Criminal Justice)

Dr. Olya Bryksina (Business)

Dr. Melanie Martin (Physics)

Dr. Sheri-Lynn Skwarchuk (Education)

All primary thesis supervisors **must be RAS faculty** at the University of Winnipeg.